

Data

- Opinions/Anecdotes
- Water Supply System Characteristics
 - Annual and Monthly Deliveries
 - Customer Types and Deliveries
 - Populations Served
 - Water Supply Demands – Past, Current and Future
- Water Conservation Goals
- Water Conservation Measures and Programs
- Effectiveness of Water Conservation Efforts

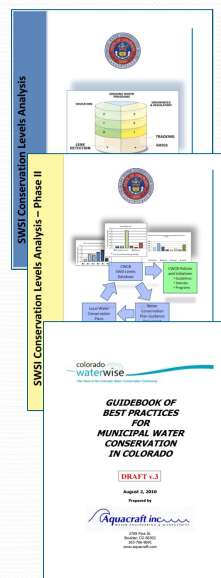


Program Implementation

- Audits
- Rebates and Giveaways
- Garden-in-a-Box
- Landscape Installation Training and Certifications
- Conservation Rates
- Regulation
- Cultural Programs
- Other

CWCB Sponsored Projects

- Determine/Estimate Potential for Conservation
 - Passive
 - Active
- Characterize What is Being Done
- Identify Areas of Potential Improvements
- Integrate Water Conservation with Utility Business Practices



SECWCD Arkansas Valley Conduit

Program Attributes

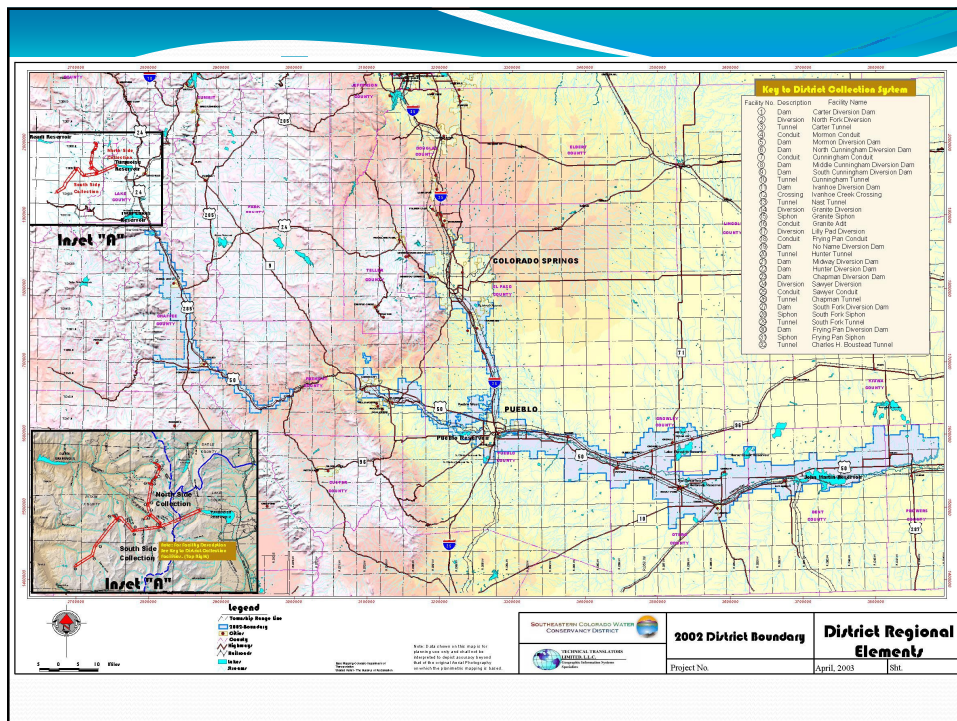
- Last Stage of 1962 Fry-Ark Project Authorization
- Water Supply to Small Communities with Compromised Water Quality
- Integration with Other SECWCD Administrative Roles
 - Drought Protection
 - Carryover Storage Management

Program Requirements

- Meet Planning Requirements of US Bureau of Reclamation
- Integrate AVC with Other District Programs
- Coordinate Regional WC Planning with 38 Project Participants

Framework for BMP Tool Box

- Benefit from Work of Others
- Collaborate with 38 Water Providers



Framework for BMP Tool Box

- Benefit from Work of Others
- Collaborate with 38 Water Providers
 - Survey
 - Board Rooms and Living Rooms

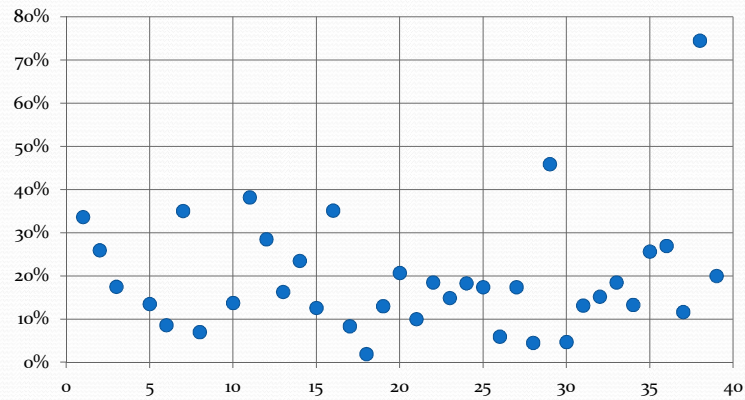


Framework for BMP Tool Box

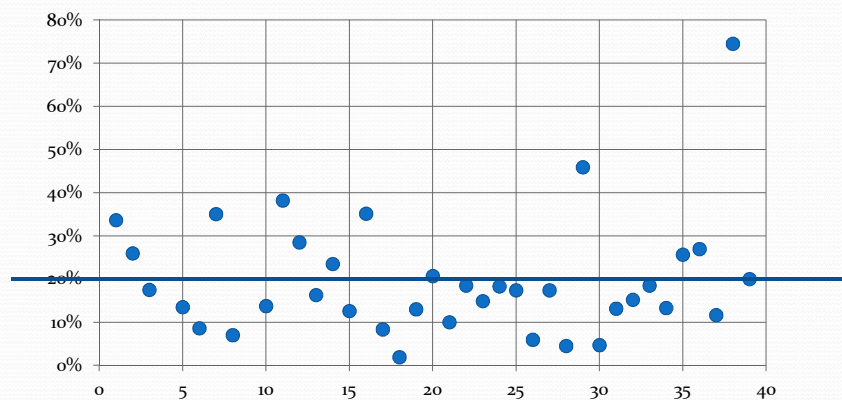
- Benefit from Work of Others
- Collaborate with 38 Water Providers
 - Survey
 - Board Rooms and Living Rooms
- Non-Draconian
- Support and Encouragement
- Data Driven



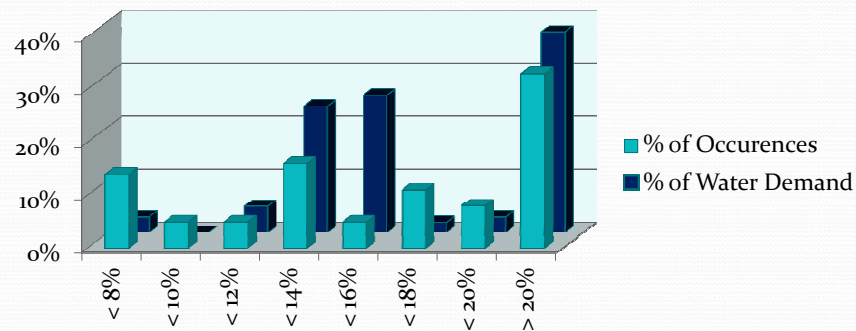
Non-Revenue Water by Participant



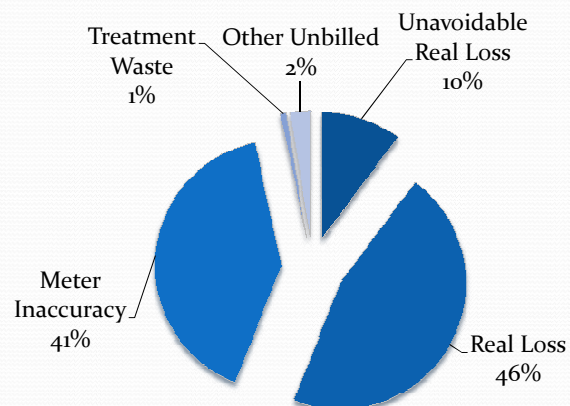
Non-Revenue Water by Participant



Breakdown of Water Loss



Components of Water Loss



Regional Water Conservation Plan

- Follow the CWCB Guidelines and Model Plan
 - Water Demands – Current and Future
 - Water Supply Characteristics and Limitations
 - Water Conservation Goals
 - District and District Wide
 - Potential Water Conservation Programs
 - Implementation

Regional Water Conservation Plan

- Follow the CWCB Guidelines and Model Plan
 - Water Demands – Current and Future
 - Water Supply Characteristics and Limitations
 - Water Conservation Goals
 - District and District Wide
 - Potential Water Conservation Programs
 - Implementation

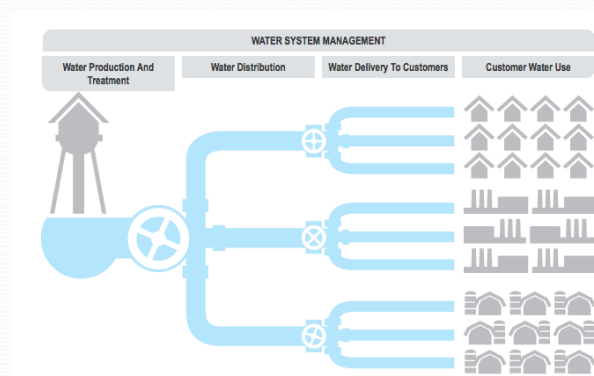


BMP Tool Box Goals

- Support Local Water Utility/Water Company
 - Planning
 - Operations
 - Customer Outreach and Education
- Promote Water Use Efficiency and Water Conservation
 - Framing and Setting Goals
 - Business Model Approach
 - Integration of Conservation with Other Utility Operations

BMP Tool Box Layout

- Five Key Areas of Water Company/Utility Activities



Data Collection and Reporting By Project Participants Starting 2014

- Includes:
 - Monthly Production
 - Monthly Sales (by customer category)
 - Non-Revenue Water (annual)
 - Number of Customer Connections (by customer category)
 - Water Rates (service fee and cost of water)
 - Status of Water Conservation Planning
 - Plan in place (yes/no)
 - Programs being implemented

In the Future



- District Web Site Update
- BMP Tool Box Review and Posting
- Implementation of Regional Plan
 - Local Planning
 - Data Collection and Management
 - Technical Assistance
 - Messaging